

## NAMIBIA

Specialists in the agricultural engineering field, with specific emphasis in the animal husbandry fields of intensive animal rearing and production systems.

We are a broad-based company and presently boast over 30 years of experience in the agriculture & industrial sectors, primarily in the following fields of: **dairy, poultry, beef, piggeries, animal feed storage & processing facilities, agricultural produce processing and waste management.**

Our consulting services offer customised, rational or standard design solutions for agricultural and industrial developments. In addition, we offer advisory services and technical assistance from basic animal handling systems to complex agro-processing facilities. The efficient implementation of professional contract and project management techniques allows us and our clients to produce quality works on time on a regional, national or international level.

Our **team** consists of engineers and technicians with extensive experience in: land surveying, geotechnical and geohydrology, structural and civil works, specifically relating to agriculture with **associates** in irrigation, agronomy, animal husbandry and agricultural processing. Most have travelled extensively throughout Africa as well as New Zealand / Australia / Israel / Europe / Middle East for agricultural project related assignments / seminars & expo's / technology sourcing and networking establishment.

Our diverse team is made up of English/French/German/Afrikaans speaking **Africans**, which allows for the ease of professional relationship establishment and communication.

## PROJECT AREAS



## SOUTH AFRICA

## ZAMBIA

### JWE Namibia

P.o. Box 99322 Eros, Windhoek, Namibia

Telephone/WhatsApp  
+264 (0) 81 346 2170

### JMEX South Africa

P.o. Box 867 Hilton, 3245, KwaZulu – Natal, RSA

Telephone/WhatsApp  
+27 (0) 82 855 7761  
+264 (0) 81 346 2170

### JWE Zambia

33A/D2 Kasisi, Lusaka, Lusaka Province, Zambia

Telephone/WhatsApp  
+260 (0) 77 289 3055  
+27 (0) 82 855 7761 (WA)

### E-Mail:

admin@jweafrica.com

### Website:

[www.jweafrica.com](http://www.jweafrica.com)

### Find us on:

[f Facebook](#)

## PROJECT TYPES

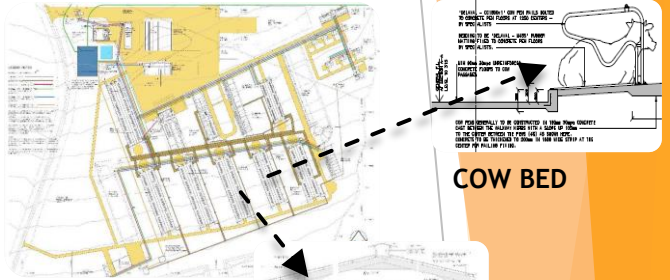
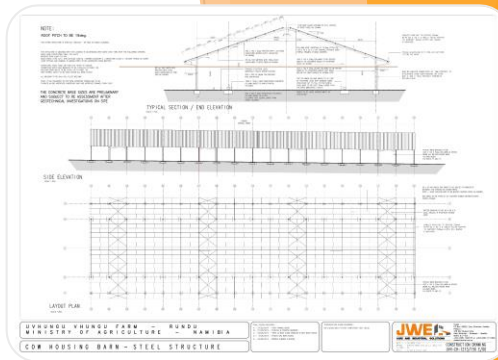
- Complete TMR Dairy Complex Developments
- Small Farmer Unit Developments
- Dairy Milking Parlours, Cow Housing, Calf & Heifer Rearing Facilities
- Poultry Breeding Projects and Commercial Poultry Broiler and Layer Operations
- Cold Chain Distribution Centre
- Animal Feed Storage and Processing
- Dairy Processing Plants & Storage
- Piggery Developments
- Beef Feedlot Developments

**SERVICES OFFERED**

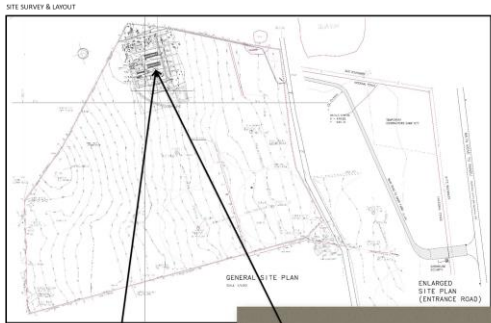
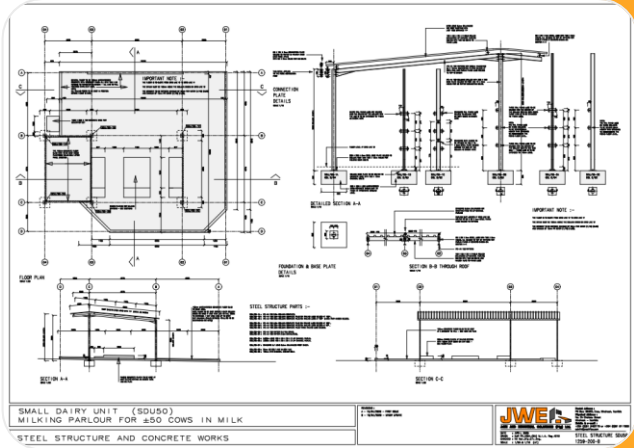
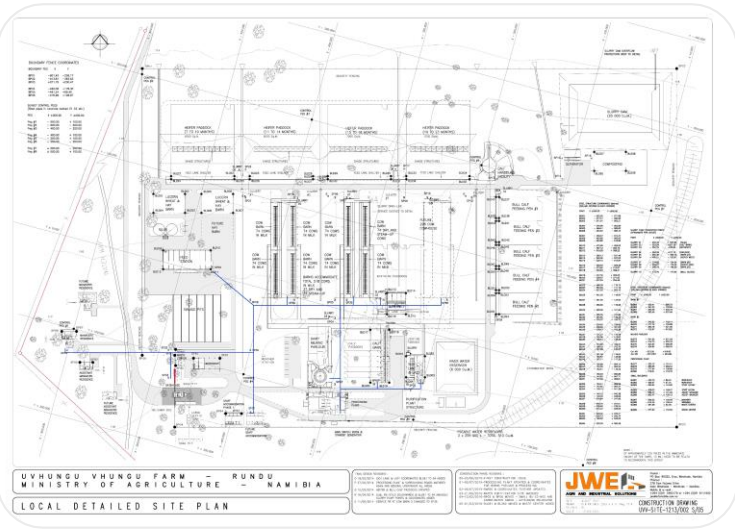
- Topographical Land and Drone Surveying
- Geotechnical and Geohydrological Assessments
- Agricultural Building and Structure Design
- Agricultural Infrastructure Development
- Waste Management
- Agricultural Product Processing
- Animal Feed Storage and Processing
- Advisory Services and Technical Assistance

**PROJECT DESIGNS**

**FROM CONCEPTUAL DESIGN TO DETAILED CONSTRUCTION DRAWINGS**

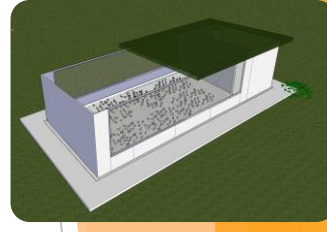


**STEEL SHED STRUCTURE**



# SMALL / EMERGING FARMER DEVELOPMENTS

## SMALL DAIRY UNIT (SDU)



## TURN KEY DAIRY DEVELOPMENT PROJECTS



## BEEF FEEDLOT DEVELOPMENTS



## WASTE HANDLING & MANURE PROCESSING PROJECTS



## COMPLETE POULTRY DEVELOPMENT PROJECTS (Broiler, Layer and Hatchery)



## COMPLETE PIGGERY DEVELOPMENT PROJECTS (Upgrades and Developments)



## ANIMAL FEED STORAGE, HANDLING & PROCESSING

