

Specialists in the agricultural engineering field, with specific emphasis in the animal husbandry fields of intensive animal rearing and production systems.

We are a broad-based company and presently boast over 30 years of experience in the agriculture & industrial sectors, primarily in the following fields of: **dairy, poultry, beef, piggery systems, animal feed storage and processing, agricultural product processing and waste management.**

Our consulting services offer customised, rational or standard design solutions for agricultural and industrial developments. In addition, we offer advisory services and technical assistance from basic animal handling systems to complex agro-processing facilities. The efficient implementation of professional contract and project management techniques allows us to produce quality works on time on a regional, national or international level.

## SMALL POULTRY UNIT - CONCEPT:

**ARE YOU AN EMERGING, SMALL, PROGRESSIVE AND OR DEVELOPING FARMER IN THE INTENSIVE ANIMAL REARING AND PRODUCTION INDUSTRY?**

**DO YOU WANT TO START OR UPGRADE YOUR POULTRY FARM, BUT CANNOT AFFORD AN EXPENSIVE SYSTEM?**

**THEN THIS IS FOR YOU!**

## SMALL POULTRY UNIT - SPU:

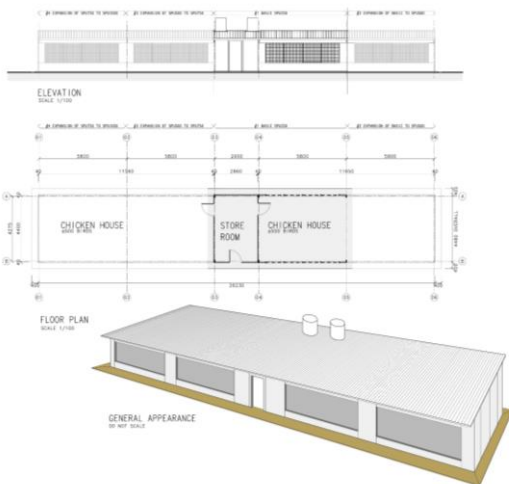
- Poultry House to suit up to 500, 1000, 1500 etc chickens
- Easy to order, supply and deliver, also to **remote sites.**
- Unit can be easily erected, installed and commissioned in a short period of time.
- Units are easily expandable by module: SPU500, SPU1000, etc
- Unit is flexible and can be adjusted to suit various uses (poultry house – broiler or layer, hatching, rearing, etc)



# OUR CONCEPT



Small grower insulated pre-fabricated broiler units  
250 to 1000 broiler bird capacities



## OFFERS:

**OPTION 1:**  
SUPPLY ONLY

**OPTION 2:**  
SUPPLY & DELIVERY ONLY

**OPTION 3:**  
SUPPLY, DELIVERY AND INSTALLATION



**CONTACT US FOR YOUR QUOTE TODAY:**

**Telephone / WhatsApp:**

+264 (0) 81 346 2170

+264 (0) 81 6111900

**E-Mail:** [admin@jweafrica.com](mailto:admin@jweafrica.com)